

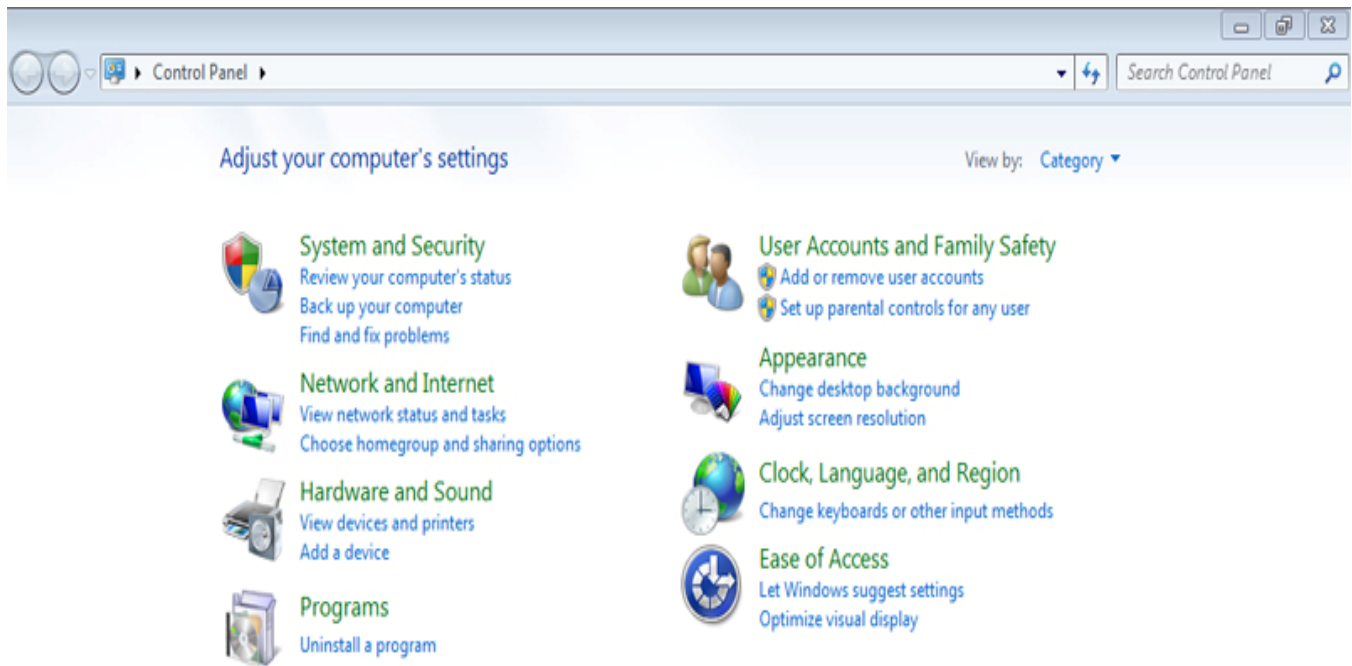
## Compatibility with Windows 7

All of our GUI's are compatible with **Windows 7**.

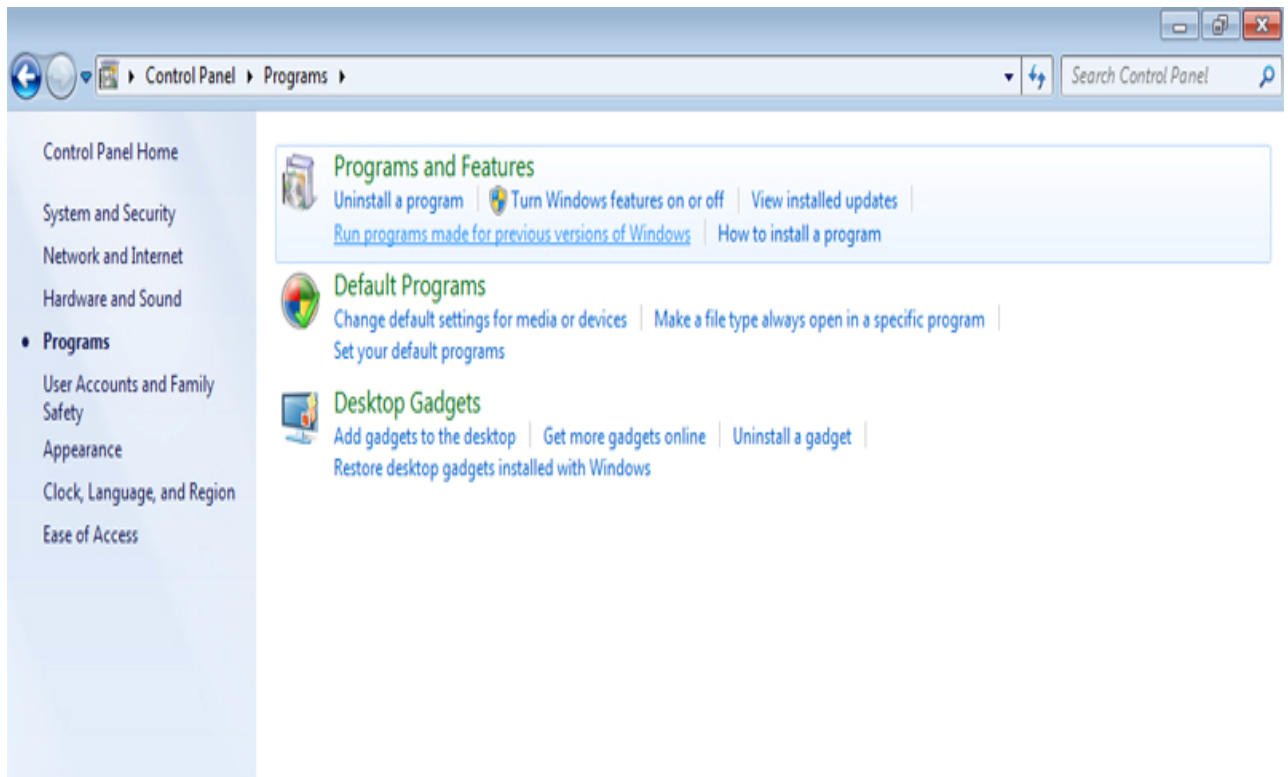
The security requirements of Windows 7 are comparatively higher than any previous Windows operating system. Because of this sometimes even genuine applications too are unable to run properly under Windows 7.

To make all of our GUI's run properly under Windows 7, we recommend the users to follow the below mentioned steps.

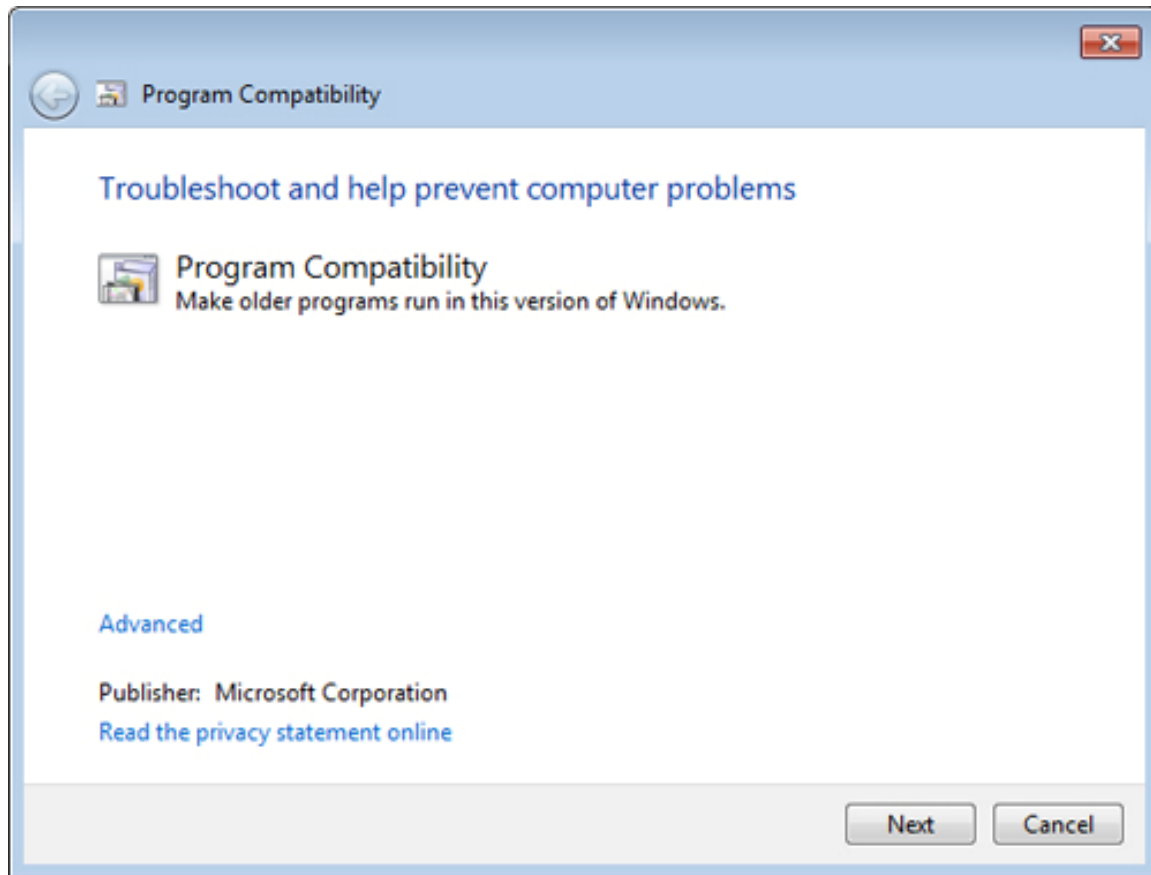
1. First of all install our **GUI**.
2. Next go to '**Start > Control Panel**'.
3. Here click '**Programs**'.



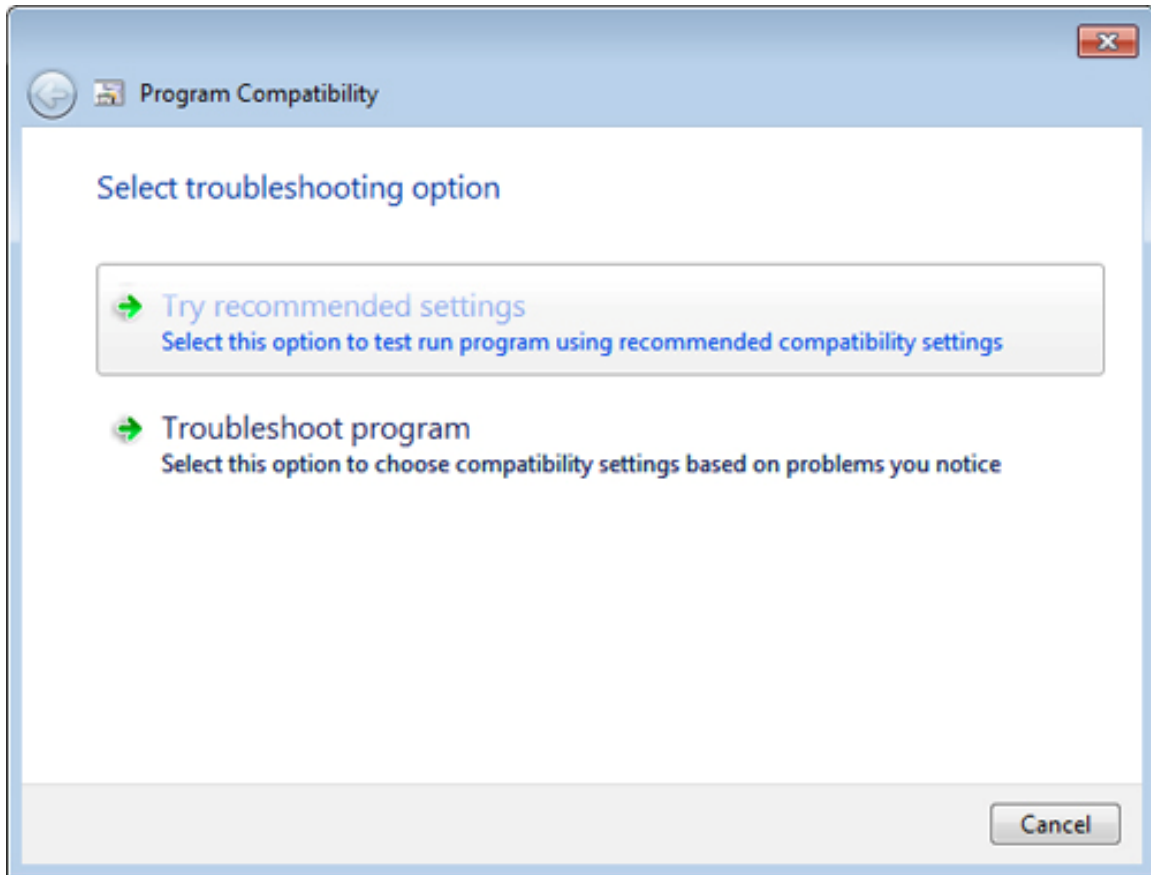
4. Under '**Programs and Features**' click '**Run programs made for previous of windows**'.



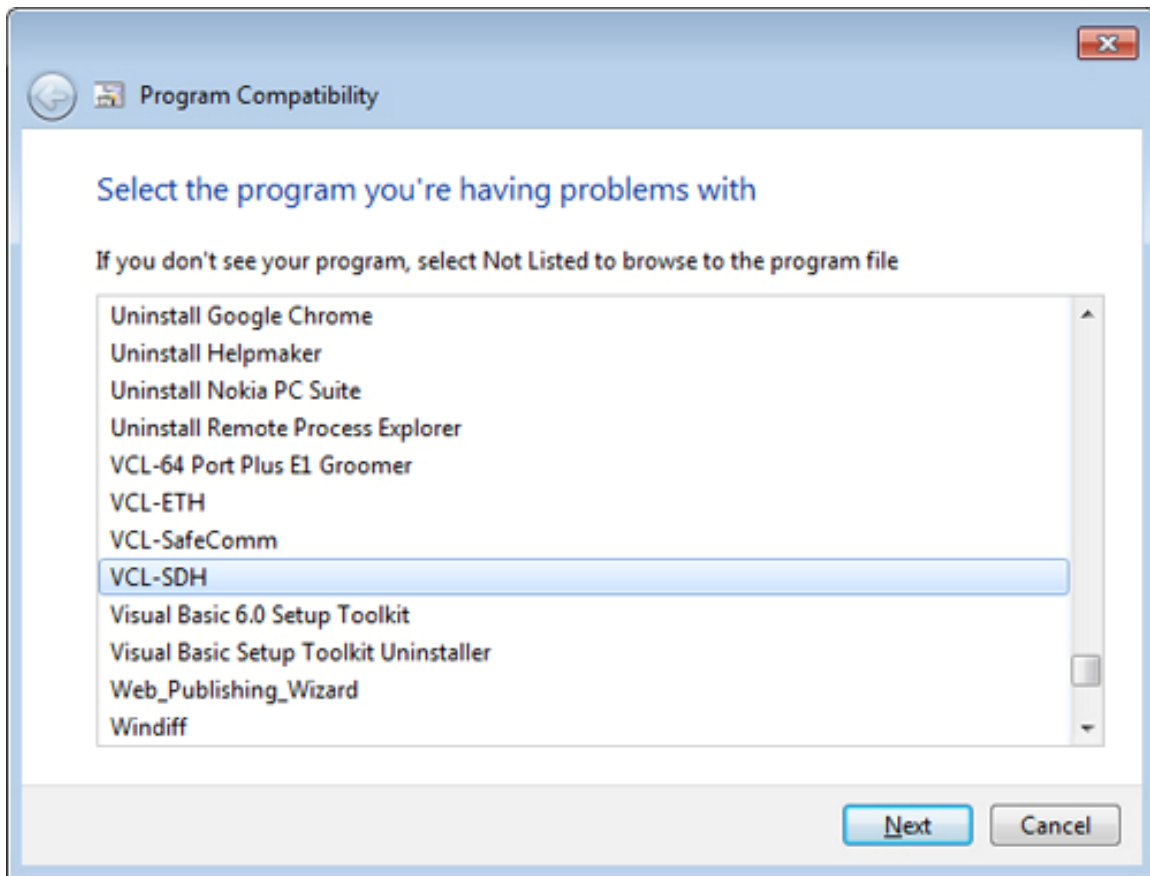
5. Here under '**Program Compatibility Wizard**' click '**Next**'.



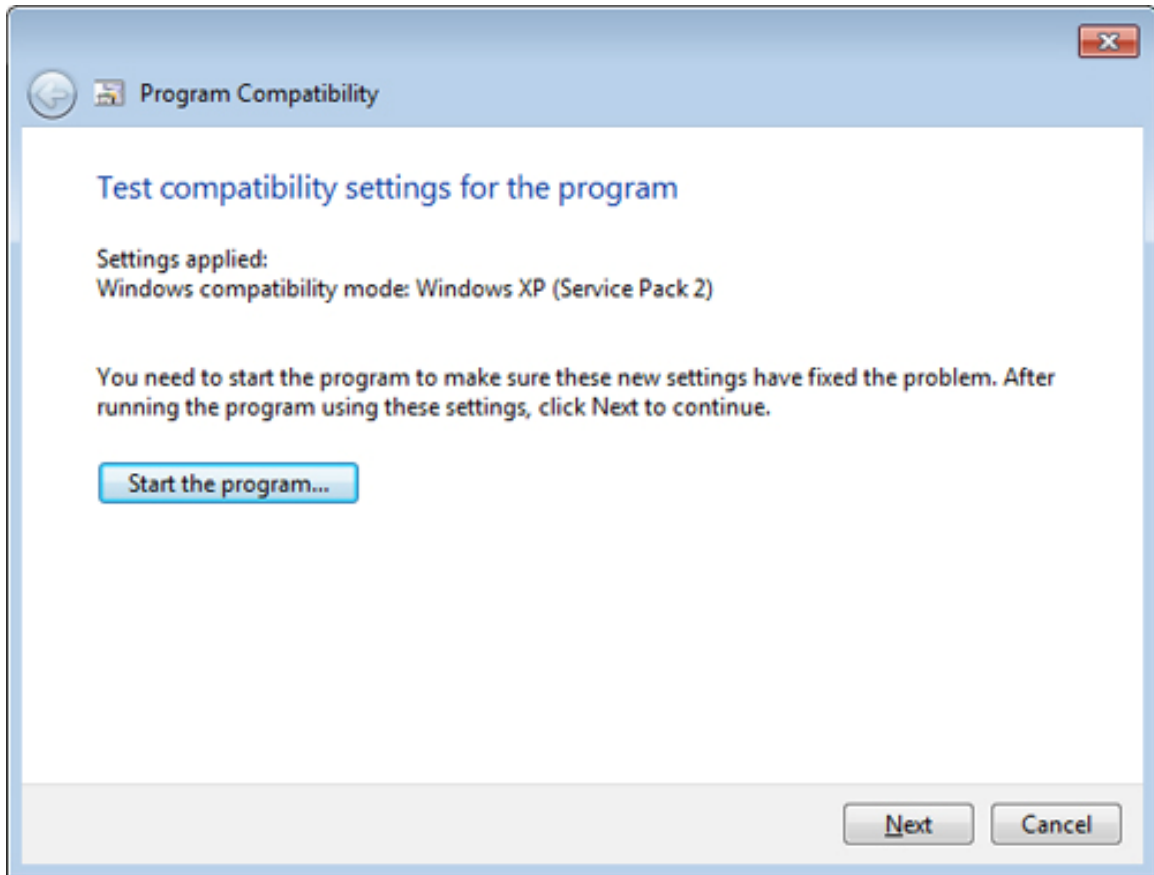
6. Here under '**Select troubleshooting option**' select the first option '**try recommended settings**'.



7. Here under '**Select the program you're having problems with**', a list of all the installed programs will be generated and displayed. Here first of all select our GUI from this list. And then click '**Next**'.



8. Here under '**Test your compatibility settings for the program**' click '**Start the program**'



After running this utility, our GUI will start running perfectly.